

1. What is AMiE?

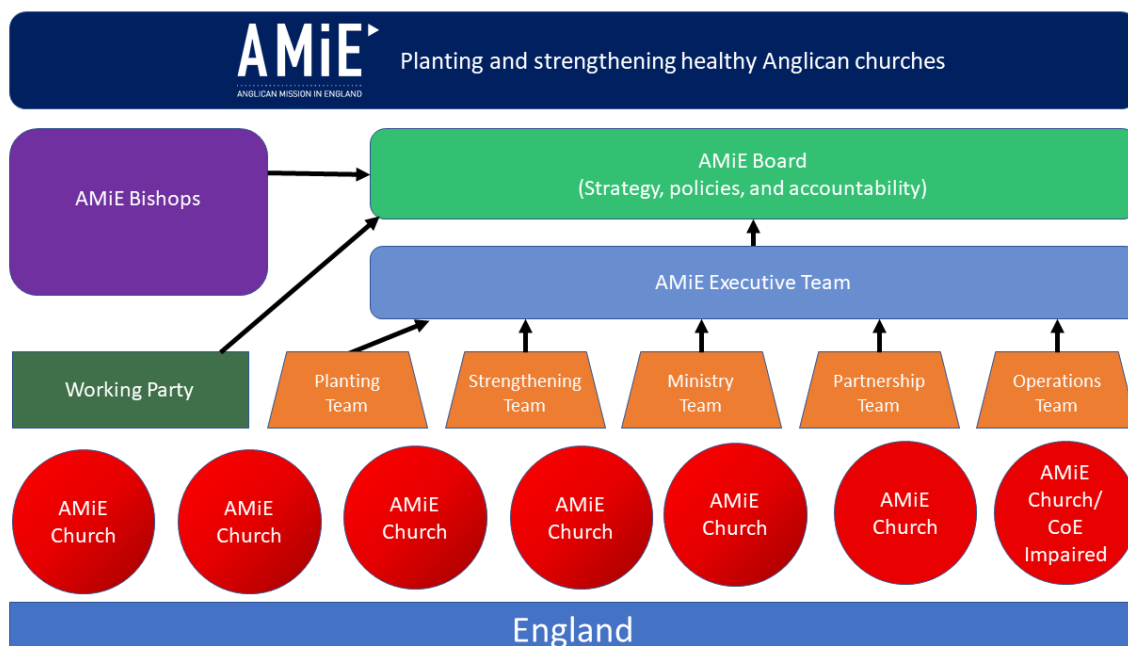
A network of Anglican churches whose priority is church planting.

- We are the Anglican **MISSION** in England

Isaiah 49:5-6

- We are the **ANGLICAN** mission in England
- We are not a life boat
- We are a growing fleet of life boats determined to reach the lost
- Why is this important?
 - We want to be known for what we are *for*
 - We want churches to join us in this mission. Could they plant? Could they train a planter? Could they share their wisdom?
- At least 25 AMiE churches by 2025 and 250 by 2050.
- Our 20/20 Vision
 - Between 2020 and 2025 we desire to...
 - Pioneer 20 new AMiE churches
 - Train 20 new AMiE church planters
 - Our aim is to raise money to resource these gospel initiatives

2. Our Structure



3. Our Five Identity Markers

- ***Biblically Rooted***

The Bible is our highest authority.

We are committed to the Reformed understanding of the Biblical Faith as outlined in the 39 Articles, the Book of Common Prayer and the Ordinal, and the Jerusalem Statement and Declaration. These documents express our doctrine of God, the Bible, salvation, the sacraments and church governance.

- ***Contextually Shaped***

AMiE churches are not required to be identical.

- ***Corporately Active***

Every Christian active in ministry.

We want men and women to flourish in the church, use their spiritual gifts and exercise leadership. However, we are convinced that it is God's good plan, for the health of the church, that only men should be ordained as Presbyters. We are Complementarians.

- ***Episcopally Served***

A Bishop's primary role is to serve local churches. They do this through their biblical teaching, prayerfulness, sharing of their ministry wisdom, and their active relational care. We are convinced that this kind of pastoral oversight will produce healthier clergy and congregations.

Bishops are not required to be distant from a local church.

What happens if something goes wrong in a local church? An outsider who is known and loved can help.

Our Bishops are the key gatekeepers of future ordained leadership.

Their involvement in future succession.

Are Bishops biblical?

How do we read the Bible? Are we committed to the *Regulative Principle* or the *Normative Principle*?

Reformed Baptist Mark Dever puts it like this, "In short, the Regulative Principle forbids anything not commanded by Scripture, whereas the Normative Principle allows anything not forbidden by Scripture."

The Normative Principle says that God has provided clear instructions for some areas of church life, but has left others more open and flexible. In these areas, we have freedom to use wisdom for different cultures and contexts.

Anglicans follow the Normative Principle when they speak about church governance.

- We don't believe that God has prescribed any one form of governance for his church. We believe God has given us freedom and flexibility in this area.
- We don't argue that the Bible prescribes Bishops, Presbyters and Deacons as the model of leadership that must be followed.
- Why do we have Bishops?
 - The Bible speaks of local churches having Elders/Presbyters. These are also called Bishops/Episkopoi.
 - Titus is told to appoint elders in every town in Crete. See Titus 1:5.
 - Much of the church throughout history has followed this pattern and found it useful
- We don't say that Bishops are for the *esse* of the church but for the *bene esse* of the church.

- ***Richly Connected***

A family of *interdependent* churches. The model of the New Testament. There is more we can do together.

- Two AMiE conferences a year. To avoid burn out and break up, and to connect leaders and their wives together.
- Prayer
- Sharing best practice
- Providing central support
- A future gathering of congregations

Gospel fellowship at the ReNew conference.

Global fellowship through Gafcon.

4. Our Values

- Prayerfulness
- Evangelism
- Generosity
- Risk-taking
- Encouragement
- Excellence
- Humility

5. Any questions?

6. Get in touch

Lee McMunn

lee@anglicanmissioninengland.org

AMiE Mission Director